

# THE CENTER DANCE COMPANY AND ARLINGTON CENTER FOR DANCE

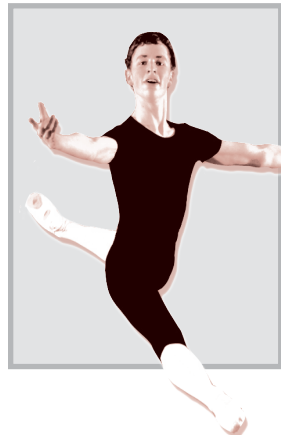
**Nancie Woods**  
Artistic Director

3808 Wilson Blvd.  
Arlington, VA 22203

Phone 703.522.2414  
Fax 703.522.8725  
www.arldance.org

November 16, 2007

## "Partner With Us!"



Dear Friend of The Center Dance Company,

A heartfelt thanks for all your support over the years. You have given the gift of dance to numerous students and we have seen enrollment grow significantly.

The Center Dance Company and its school Arlington Center for Dance are moving to a brand new facility! The challenge of this unanticipated relocation is providing us with a wonderful opportunity to provide a beautiful new home for our loyal students and new students from the Fairfax area. This new Center will be located in Merrifield, just outside the beltway and will feature improved studio sizes, natural light, top of the line dance flooring and ample parking.

As you can imagine, the "build-out" of our new studio space presents a number of formidable challenges – not the least of which is an estimated \$400,000 just to outfit the new space as a dance facility! Each studio, for example, requires mirrors (\$5,000); barres (\$3,000); specialty floors (\$20,000); and a sound system (\$2,000).

Our fundraising committee has developed many strategies to reach this goal. However, our primary fundraising source will be people like you - lovers of dance who want to see us continue our mission of nurturing and training dancers of all ages, providing rigorous ballet training for aspiring professionals, and offering accessible, affordable, and artistically superb performances.

We are truly excited about this opportunity to improve our program and hope you will "Partner with Us". Your generous tax deductible contribution will help keep The Center Dance Company alive and even more vibrant.

**And, if you make your contribution before December 31, 2007, your contribution will be matched dollar for dollar by an anonymous donor (up to an aggregate of \$30,000).**

There are several ways to make your tax-deductible donation to help support us:

- Write a check to "The Center Dance Company" and send it to us in the enclosed envelope
- Visit [www.arldance.org](http://www.arldance.org) and click the "Donate Now" button
- A donation of stock. For information please contact Jan Bull, Administrative Director, 703-522-2414.

On behalf of all our dancers, faculty, choreographers and staff, we thank you in advance for your contribution and enabling The Center Dance Company to continue to fulfill its mission.

Gwynn Geiger Hegyi  
President, Board of Directors

Nancie Woods  
Artistic Director

***P.S. Don't forget, your contribution will be matched if you give before Dec. 31, 2007!***

-----  
**Yes! I want to support the Center Dance Company**  
**You can also donate online with your credit card at [www.arldance.org](http://www.arldance.org)**

Name \_\_\_\_\_

Address \_\_\_\_\_

City \_\_\_\_\_ State \_\_\_\_\_ Zip \_\_\_\_\_

Phone \_\_\_\_\_

Email \_\_\_\_\_

Enclosed is my contribution check for:

- \$10,000 Benefactor
- \$ 5,000 Grand Allegro
- \$ 3,000 Grand Jete
- \$ 2,000 Tour Jete
- \$ 1,000 Arabesque Circle
- \$500 Pirouette Circle
- \$ 300 Sponsor
- \$ 150 Patron
- \$ 100 Supporter
- \$ \_\_\_\_\_ Friend

The Center Dance Company, Inc. is a non-profit 501(c)(3) organization. Your gift is tax-deductible to the fullest extent allowable by law.  
A financial statement is available upon written request from the Commonwealth of VA Office of Consumer Affairs.